

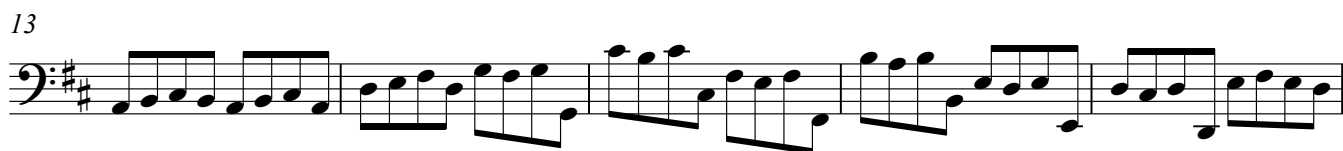
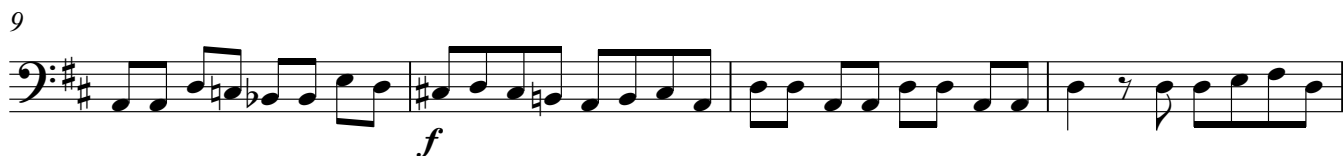
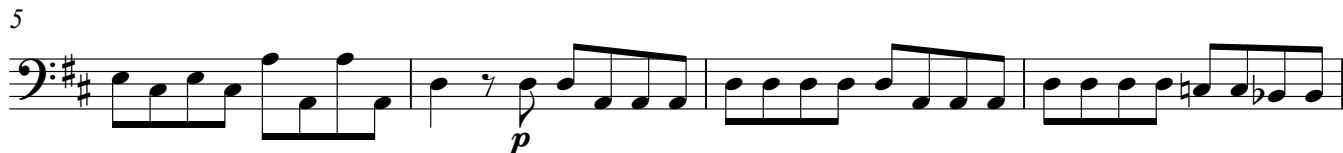
Basso

Concerto RV 93

(F. XII, n. 15)

ANTONIO VIVALDI
(Venezia 1678- Wien 1741)

[Allegro]



Largo

Measures 52-55: Bass clef, key signature of one sharp (F#), common time (C). The music consists of a steady eighth-note pattern with occasional sixteenth-note pairs.

56

Measures 56-59: Bass clef, key signature of one sharp (F#), common time (C). Measure 56 continues the eighth-note pattern. Measure 57 has a repeat sign. Measure 58 has a repeat sign. Measure 59 ends with a fermata.

61

Measures 61-64: Bass clef, key signature of one sharp (F#), common time (C). The music continues with eighth-note patterns.

65

Measures 65-68: Bass clef, key signature of one sharp (F#), common time (C). Measure 68 ends with a fermata.

Allegro

Measures 69-74: Bass clef, key signature of one sharp (F#), 12/8 time signature. The music features a dotted quarter note followed by an eighth note, with a steady eighth-note accompaniment.

75

Measures 75-80: Bass clef, key signature of one sharp (F#), 12/8 time signature. The music continues with the dotted quarter-eighth pattern.

81

Measures 81-85: Bass clef, key signature of one sharp (F#), 12/8 time signature. Measure 85 ends with a fermata.

86

Measures 86-89: Bass clef, key signature of one sharp (F#), 12/8 time signature. Measure 86 has a repeat sign. Measure 89 has a sharp sign (#) above the staff.

90

Measures 90-93: Bass clef, key signature of one sharp (F#), 12/8 time signature. The music features a more complex eighth-note pattern.

94

Measures 94-98: Bass clef, key signature of one sharp (F#), 12/8 time signature. The music continues with eighth-note patterns.

99

Measures 99-102: Bass clef, key signature of one sharp (F#), 12/8 time signature. Measure 102 ends with a fermata.